



GP-2000T

Guest Pager Manual

Please read the user manual carefully
before start using the device.

Table of contents

Getting Started

1. Components & Specification	3
2. Installation	3
3. Keypad Description	4

Functions

4. General Function Setting	
4-1. Channel Number Setting	5
4-2. Group Number Setting	5
4-3. Pager Number Setting	6
4-4. Random Number Setting	6
4-5. Pager Alarm Time Setting	7
4-6. Pager Alarm Type Setting	7
5. Additional Function Setting	
5-1. Auto Retransmission	8
5-2. Out of Range Check	8
5-3. RF Output for Out Range Alarm	9
5-4. RF Output Power Control	9
5-5. RF Test Mode	10
5-6. Demo Call for Pager	10
5-7. RF Reception ON/OFF	11
5-8. Beep & Haptic Feedback Setting	11
6. How to Use the Guest Pager	
6-1. How to Call a Pager	12
6-2. How to Clear the Call	12
7. Initialization	13

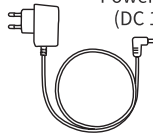
1. Components & Specification

Components

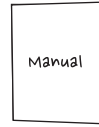
Transmitter GP-2000T



Transmitter
+ Antenna
(GP-2000T)

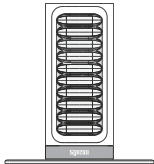


Power Adapter
(DC 12V/1A)

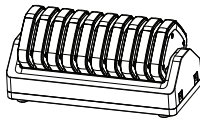


User Manual

Guest Pager



SGP-100R



SGP-300R



Jump Cable
(Optional Purchase)



Adapter
(DC 9V/5A)

Specification

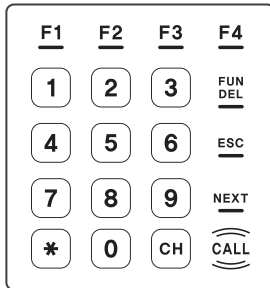
	SGP-100R	SGP-300R	GP-101R	Transmitter (GP-2000T)
Frequency	FSK/433.42MHz	FSK/433.42MHz	FSK/433.42MHz	FSK/433.42MHz
Power source	DC 9V/5A	DC 9V/5A	DC 8V/3A	DC 12V/1A
Battery	3.7V 320mAh Li-polymer	3.7V 320mAh Li-polymer	3.7V 180mAh Li-polymer	—
Dimension	W47 x L102 x H12 mm	W81 x L76 x H12 mm	φ 95 × H15 mm	W140 x L149 x H40 mm
Weight	44g	46g	75g	120g
Color	Black	White	Black	Black
	GP-100R	GP-200R	GP-300R	
Frequency	FSK/433.42MHz	FSK/433.42MHz	FSK/433.42MHz	
Power source	DC 8V/3A	DC 8V/3A	DC 8V/3A	
Battery	3.7V 180mAh Li-polymer	3.7V 180mAh Li-polymer	3.7V 180mAh Li-polymer	
Dimension	φ 95 × H17 mm	W53 x L105 x H11 mm	W58 x L115 x H15 mm	
Weight	86g	35g	72.5g	
Color	Red, Green	Black	White blue	

2. Installation

GP-2000T

- 1) Plug the power adapter and insert the connector into the port next to the antenna.
- 2) Turn on the power switch on the right side of the transmitter.
- 3) Upon completion of full charging, set Gn, Pn and Guest Pager number to start using it.

3. Keypad Description



FUN DEL Enter the function setting/ Delete

ESC Cancel/ Exit

NEXT Menu shift

CALL Save/ Call

***** Alphabets and special characters

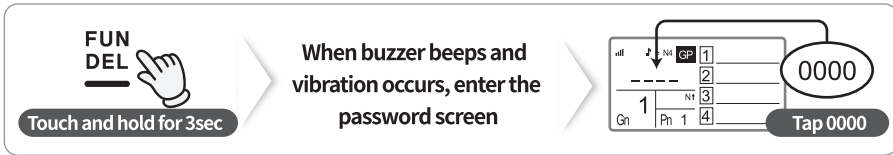
Description of Functions

Functions			Default	Range	Display
General Function	Channel Number Setting	Pn	1	1~99	Pn
	Group Number Setting	Gn	1	1~99	Gn
	Pager Number Setting	Fn	0	0~9999	0~9999
	Pager Alarm Time Setting	Ct	30	0~99 sec	ct00~99
	Pager Alarm Type Setting (Beep/ Vibration/ LED)	Bu	0(OFF)	0-OFF, 1-ON	buof, buon
		Mt	1(ON)	0-OFF, 1-ON	Htof, Hton
		LE	1(ON)	0-OFF, 1-ON	LEof, LEon
Additional Function	Auto Retransmission	AT	0(OFF)	0-OFF, 1-ON	—
	Out of Range Check	Rc	0(OFF)	0-OFF, 1-ON	rcof, rcon
	RF Output for Out Range Alarm	OR	2	1~7	—
	RF Output Power Control	RP	2	1~2	—
	RF Test Mode	TC	0(OFF)	0-OFF, 1-ON	—
	Demo Call for Pager	DE	0(OFF)	0-OFF, 1-ON	dEof, dEon
	RF Reception ON/OFF	RO	0(ON)	1-OFF, 0-ON	「 」
	Beep Sound Setting	SC	1(ON)	0-OFF, 1-ON	—
	Haptic Feedback Setting	VC	1(ON)	0-OFF, 1-ON	—

⚠ Caution! Please make sure that all guest pagers are on the charging unit while setting.

4. General Function Setting

How to Enter the General Function Setting

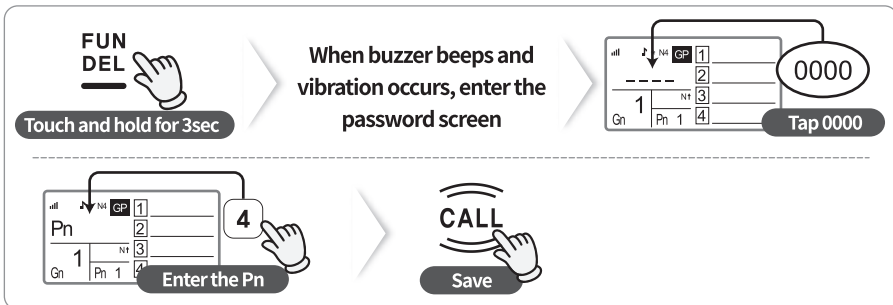


⚠ When each function setting is finished, tap **ESC** to exit from the settings.

4-1. Channel Number Setting [Pn]

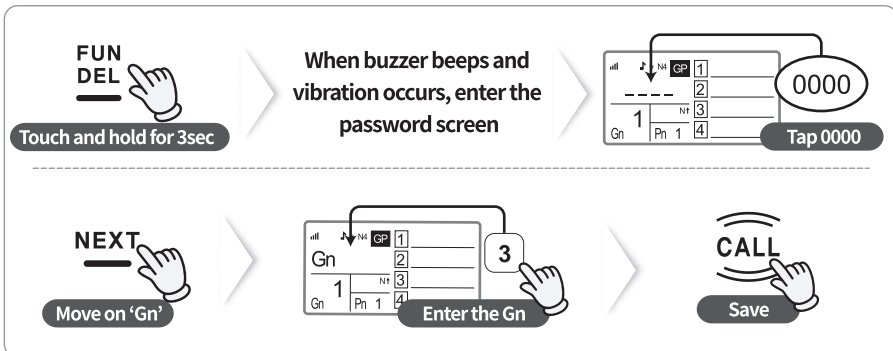
Assign the channel number to pager set, in order to use separately with other channels.

⚠ Channel & Group numbers can be set only once at first. The initialization is required when it needs to be changed.



4-2. Group Number Setting [Gn]

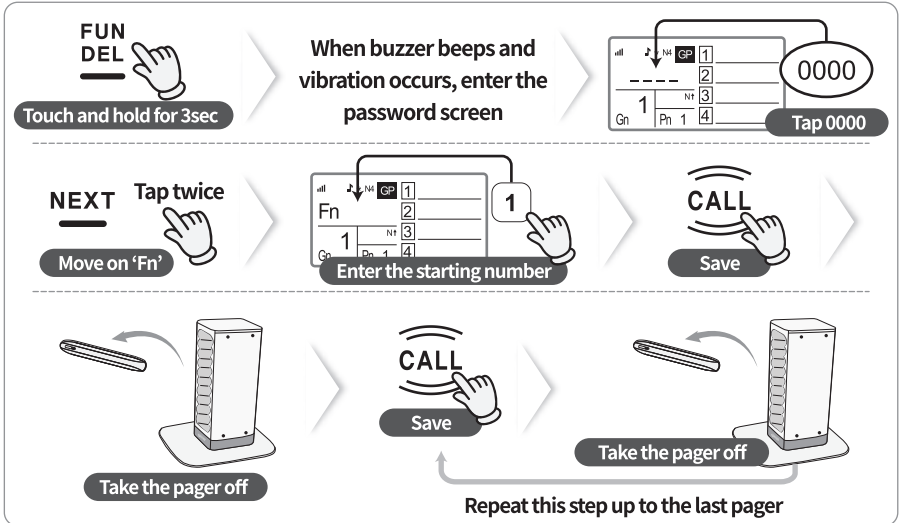
Assign the group number to pager set, in order to use separately with other groups.



4-3. Pager Number Setting [Fn]

Able to preset the number for each guest pager.

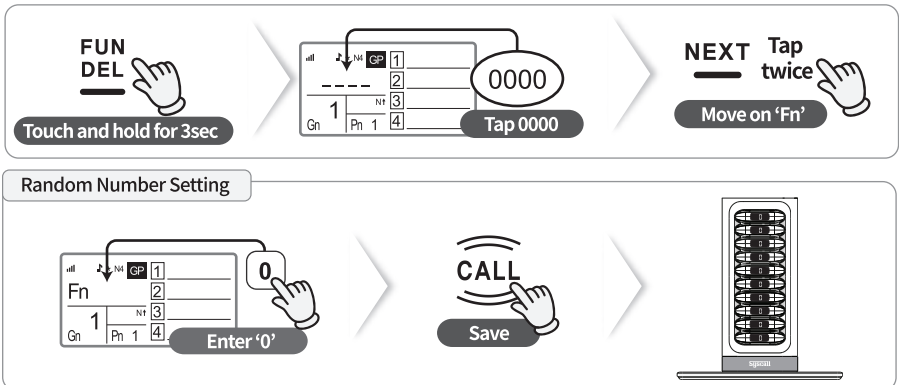
⚠ This setting is only applicable when Pn/Gn of the pagers and transmitter are matched up together. Please make sure that all guest pagers are on the charging unit while setting.



4-4. Random Number Setting [Fn]

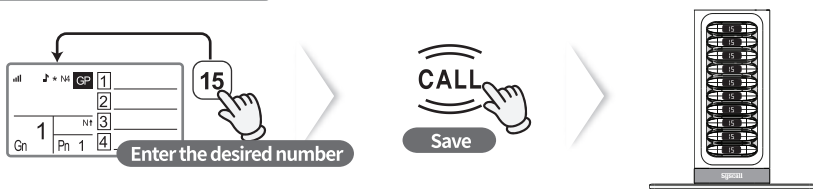
Able to allocate any numbers to guest pagers whenever it is used. (Up to 4 digits)

⚠ This setting is only applicable when Pn/Gn of the pagers and transmitter are matched up together. Please make sure that all guest pagers are on the charging unit while setting.



* Tap '0' once again then tap 'CALL', although there is '0' or any other number next to Fn.

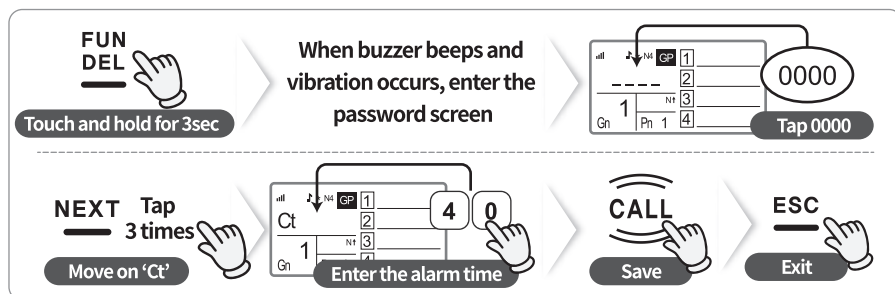
How to Use the Random Number



* Enter the desired number on the home screen of the transmitter, then check whether the number is applied to all pagers before pass it to customers.

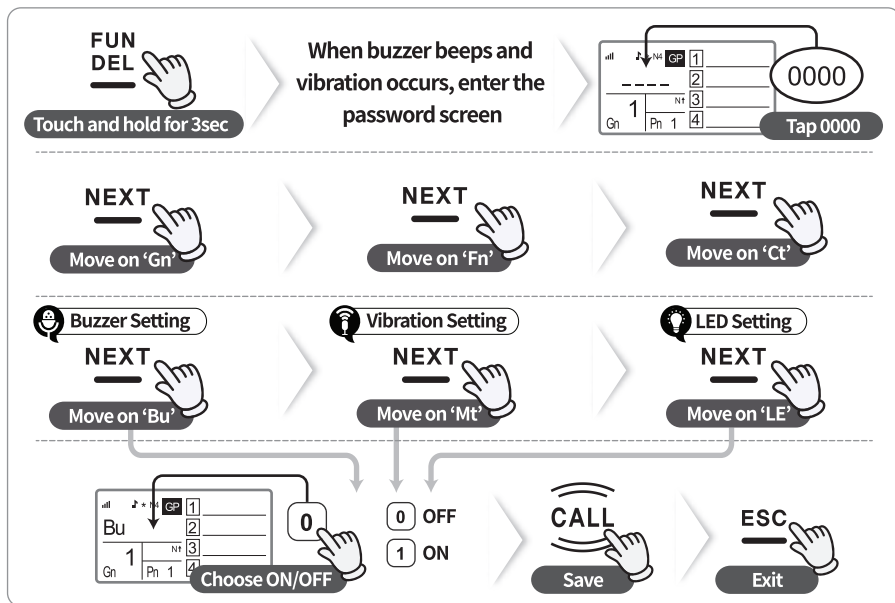
4-5 . Pager Alarm Time Setting [Ct]

Set the alarm time when the pager is called. (Range: 0~99sec)



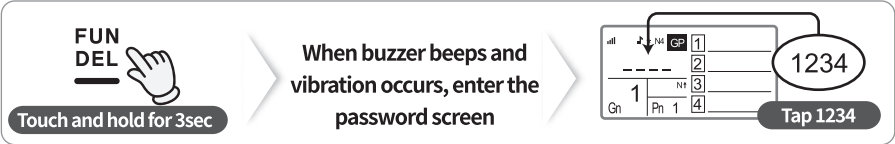
4-6. Pager Alarm Type Setting (Bu/Mt/LE)

Turn ON/OFF the Buzzer, Vibration and LED of the pager.



5. Additional Function Setting

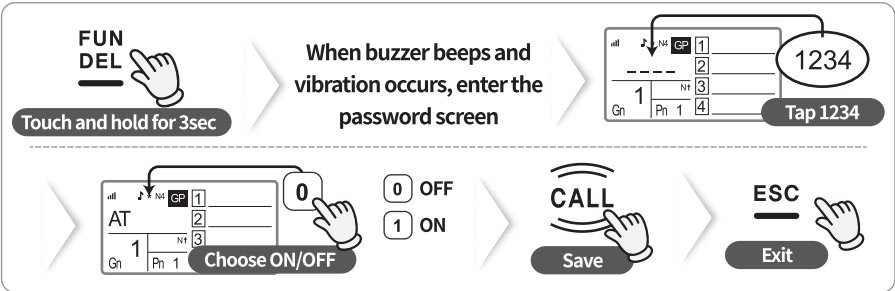
How to Enter the Additional Function Setting



⚠ When each function setting is finished, tap **ESC** to exit from the settings.

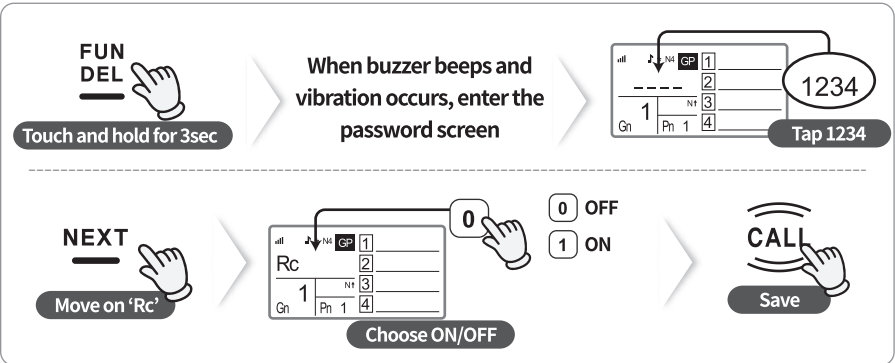
5-1. Auto Retransmission [AT]

Transmitter sends signal up to 50 times until the pager receives it.



5-2. Out of Range Check [Rc]

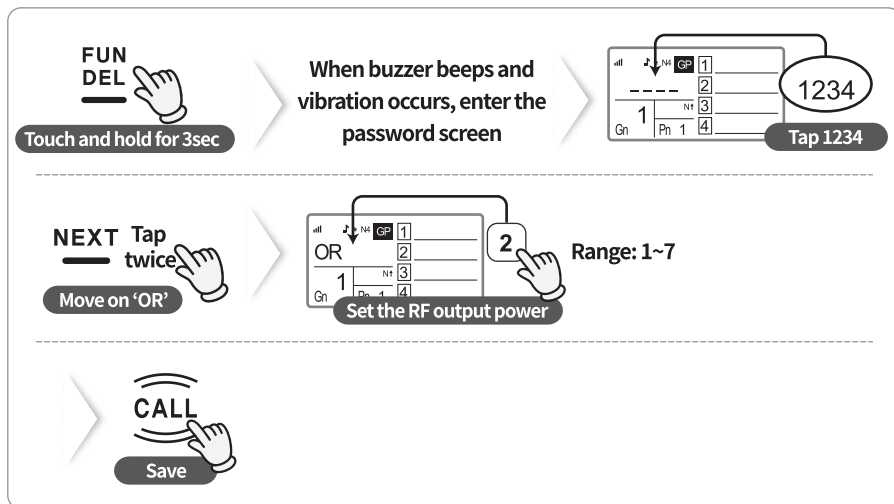
When the distance between transmitter and pager goes beyond the wireless range, the pager will emit a continuous beep sound until it is returned to the charging unit or back in range.



⚠ Caution! This function may cause the alarm if the transmitter power is OFF.

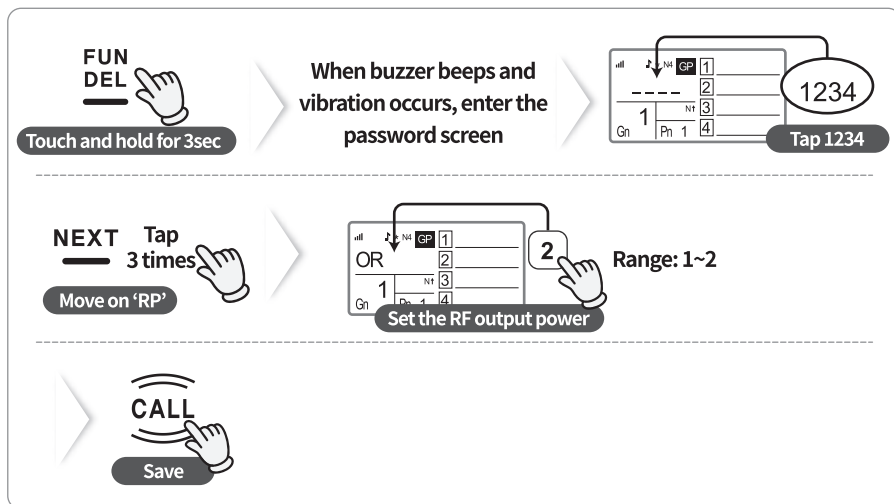
5-3. RF Output for Out Range Alarm [OR]

When 'Rc' function is ON, user can control the RF output for our range alarm. (Range: 1~7)



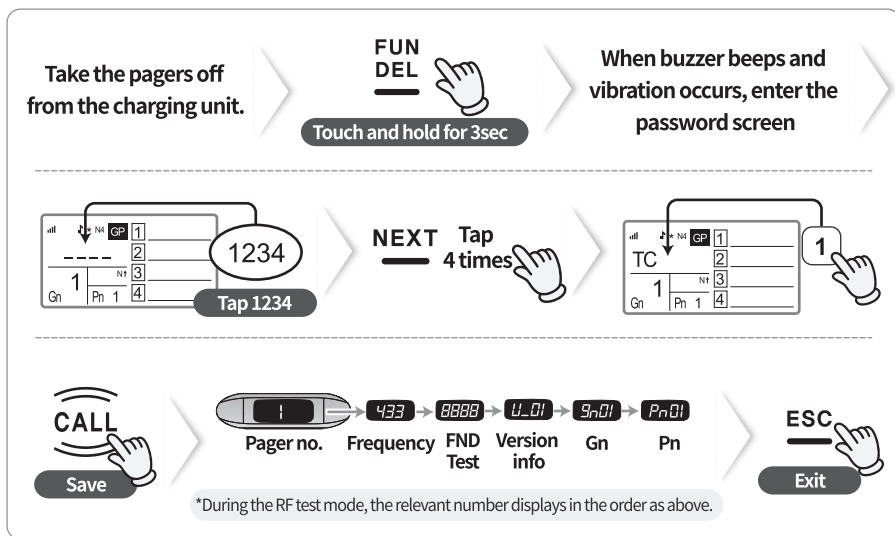
5-4. RF Output Power Control [RP]

Able to set the RF output power of the transmitter. (Range: 1~2)



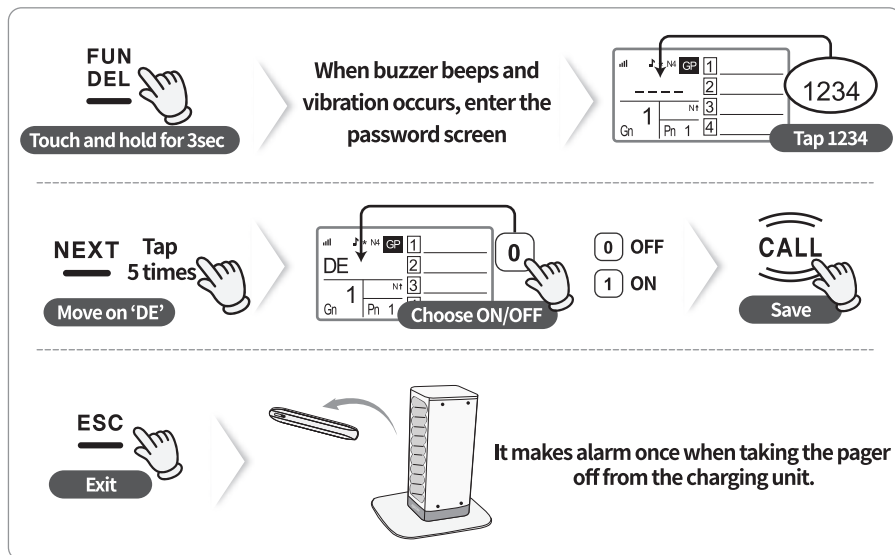
5-5. RF Test Mode [TC]

User can verify the information of each pager when the test mode is ON. Transmitter sends a signal repeatably to confirm registered Gn/Pn/Call Number of Guest Pager.



5-6. Demo Call for Pager [DE]

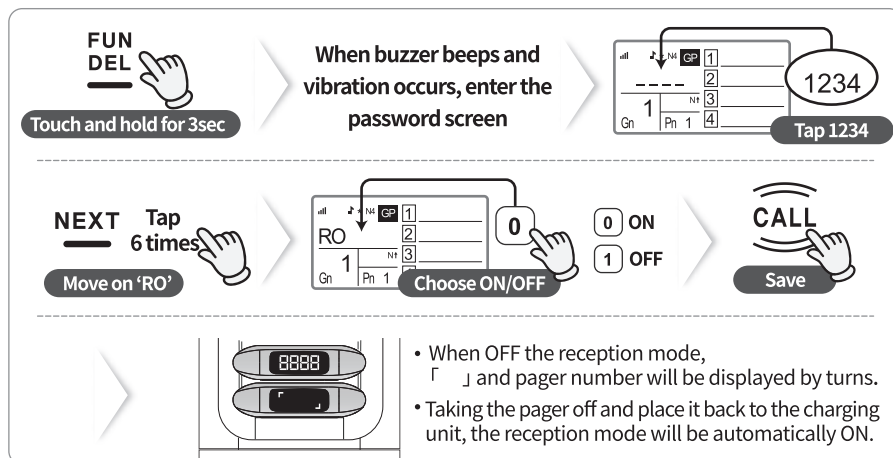
When the guest pager is taken off from the charging unit, it makes alarm once itself.



5-7. RF Reception ON/OFF [RO]

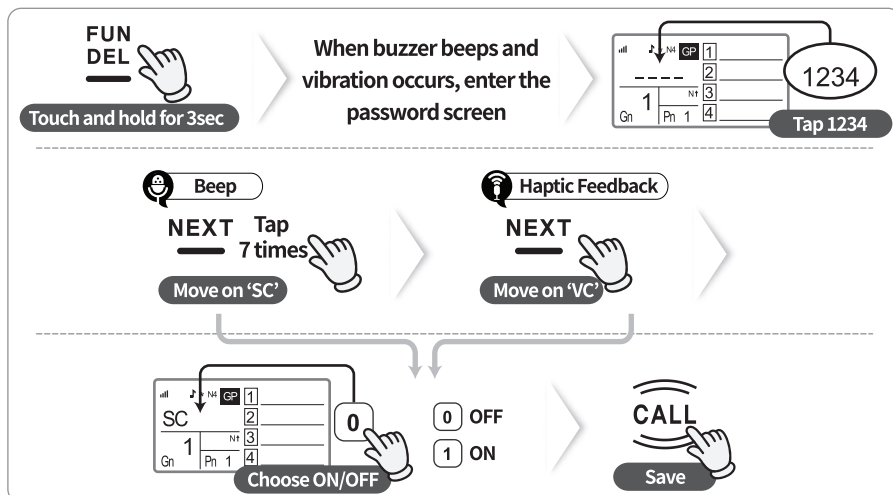
Able to inactivate the RF reception of guest pagers

*Reception mode: OFF[1]/ ON[0]



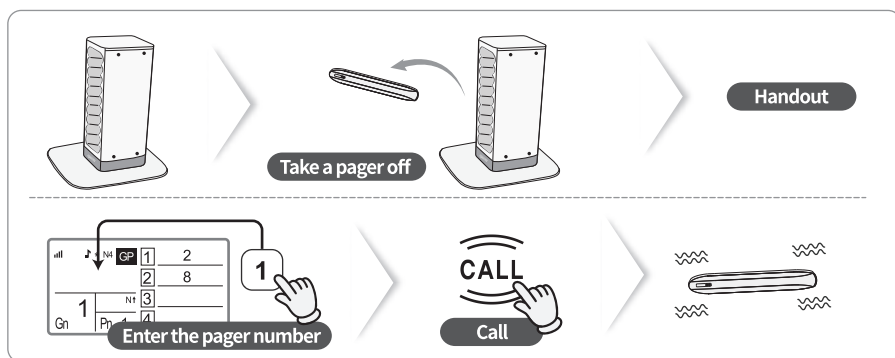
5-8. Beep [SC] & Haptic Feedback Setting [VC]

Turn ON/OFF the beep sound & haptics of the transmitter.

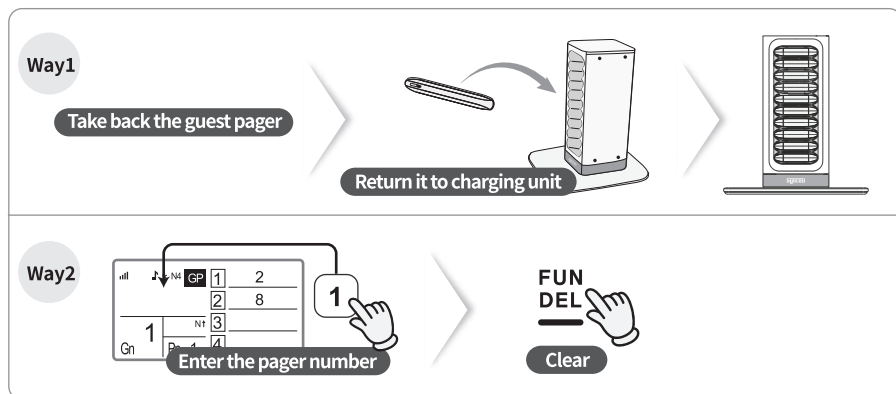


6. How to Use the Guest Pager

6-1. How to Call a Pager

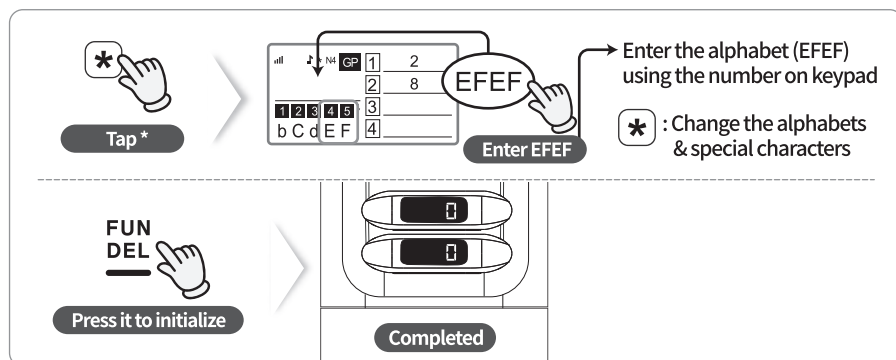


6-2. How to Clear the Call



7. Initialization

Channel & Group numbers can be set only once at first. The initialization is required when it needs to be changed. Please make sure that all guest pagers are on the charging unit while initializing.



Memo



syscall



Syscall

■ **SYSCALL France - www.syscall.fr**

0033 (0)1 84 17 61 81 - contact@syscall.fr

**242 boulevard de Stalingrad 94500 Champigny sur Marne
FRANCE**

Manufacturer

■ **NTTWORKS CO., LTD**

**413-9 NTTWORKS Bldg, Galhyun-Dong, Eunpyong-Gu Seoul
KOREA**